

DESCRIPTION: STRAIGHT, SNAP TOGETHER - METALIZED PLASTIC

SPECIFICATIONS:

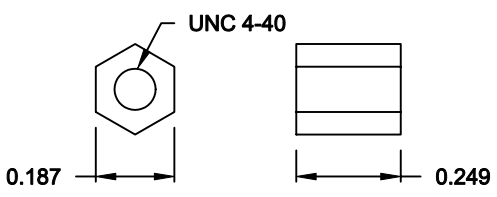
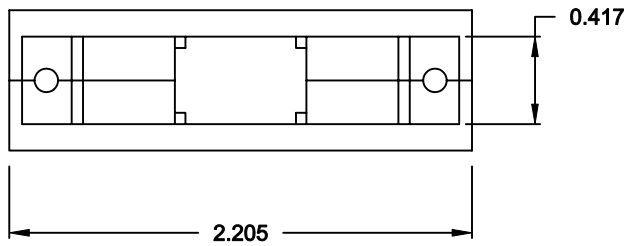
MATERIAL: A.B.S. UL94-HB
 PLATING: NICKEL OVER COPPER

BACKSHELL KIT INCLUDES:

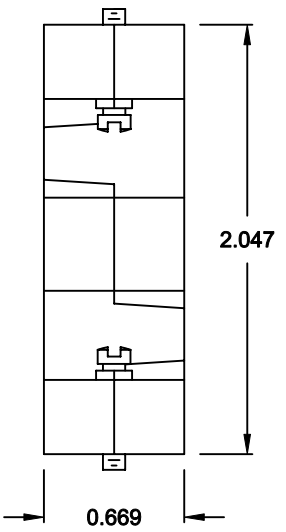
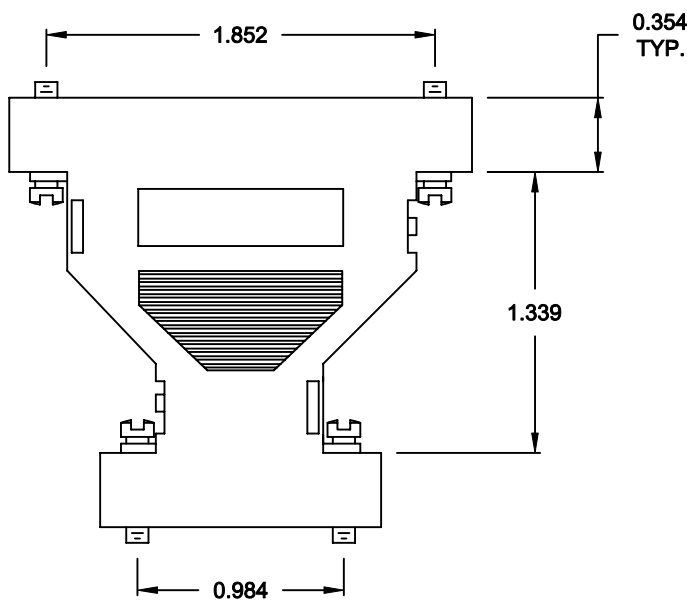
- (2) BACKSHELL HALVES
- (4) JACKSCREWS

NOTE:

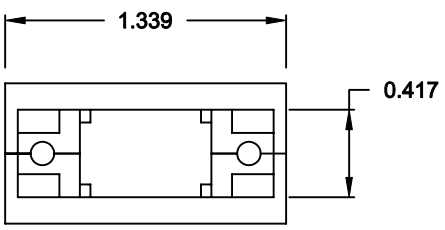
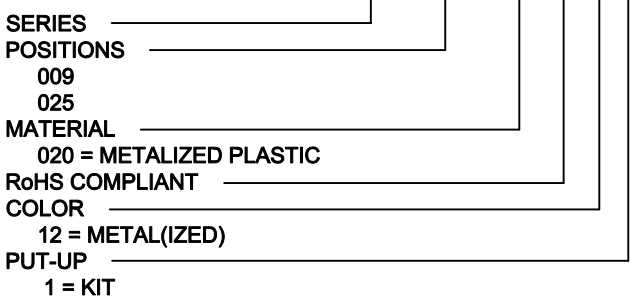
1. IF REQUIRED, COUPLING FOR FEMALE CONNECTOR, P/N 160-000-006R032, MUST BE ORDERED SEPARTELY



SEE NOTE 1.



957-925-020R121



DO NOT SCALE FROM DRAWING



THESE DRAWINGS AND SPECIFICATIONS ARE THE PROPERTY OF NorComp AND SHALL NOT BE REPRODUCED, COPIED OR USED AS THE BASIS FOR THE MANUFACTURE OF SALE OF APPARATUS WITHOUT WRITTEN PERMISSION.

DRAWN: C. SMITH	DATE: 05-11-07
CHECKED:	DATE:

NorComp

SCALE: 1:1	SHEET 1	OF 1	REV 0
DWG NO. 957-925-020R121			

RoHS COMPLIANT